

Partner Search - European Defence Fund proposal

SME Consortium Leader (Region of Murcia, Spain)

Spanish SME Consortium Leader is looking for two partners for an EDF proposal under the call EDF-2026-LS-DA-SME-NT-STEP: Non-thematic development actions by SMEs.

About MECANICAS BOLEA

[MECANICAS BOLEA, S.A.](#) is an industrial services company with more than 40 years of expertise, specialized in the design and manufacture of process equipment, pressure vessels and storage tanks for the chemical, petrochemical, pharmaceutical and food industries as well as in the maintenance of all types of industrial and naval facilities. More information in presentation attached.

Call title and identifier

[EDF-2026-LS-DA-SME-NT-STEP: Non-thematic development actions by SMEs](#)

Project proposal

In line with the non-thematic nature of the call, the project focuses on addressing a highly specific operational requirement, while contributing to key STEP target investment areas relevant to defence technologies. Within this framework, the consortium seeks to integrate a Nordic provider of front and/or side scan sonar sensing capabilities, supported by advanced filtering, signal sanitation and signal processing techniques. These technologies are expected to significantly improve the quality, robustness and operational usability of sensing data in challenging environments, thereby contributing to safer and more reliable defence operations. The selected partner will play a key technical role within a European SME-driven consortium, contributing directly to the development and integration activities of the EDF proposal.

Type of Partnership. Research and development cooperation agreement

Partners Sought

1) Nordic provider of front and/or side scan sonar sensing capabilities, supported by advanced filtering, signal sanitation and signal processing techniques. These technologies are expected to significantly improve the quality, robustness and operational usability of sensing data in challenging environments, thereby contributing to safer and more reliable defence operations. The selected partner will play a key technical role within a European SME-driven consortium, contributing directly to the development and integration activities of the EDF proposal. The selected partner will address a highly specific defense-related operational requirement.

Technical Specification or Expertise Sought. The consortium is seeking a Nordic SME with proven expertise in:

- Front scan and/or side scan sonar sensor technologies
- Embedded or standalone advanced signal filtering and sanitation

Targeted countries

- Sweden
- Norway
- Finland
- Denmark

2) SME Providing Military-Grade Surface RF Communications solutions between a manned vessel and an Uncrewed Surface Vehicle (USV). The sought solution must enable reliable, secure and robust ship-to-USV communications in contested and harsh maritime environments, supporting command, control and mission data exchange. The scope includes but is not limited to: Military-grade RF communication links; Dedicated antennas and antenna integration suitable for maritime platforms; Secure, resilient and low-latency communications, compatible with defence operational requirements; Solutions NATO-certified or compliant with NATO standards.

Technical Specification or Expertise Sought:

- Surface military-grade RF communications (ship-to-USV)
- Maritime RF systems and antennas
- Secure and resilient defence communications
- NATO-certified or NATO-compliant solutions

Targeted countries: all eligible

Contact details:

Region of Murcia Brussels Office

of.murcia@info.carm.es

+32 2 22 333 48

PROJECTS & CAPABILITIES

FEBURARY, 2026

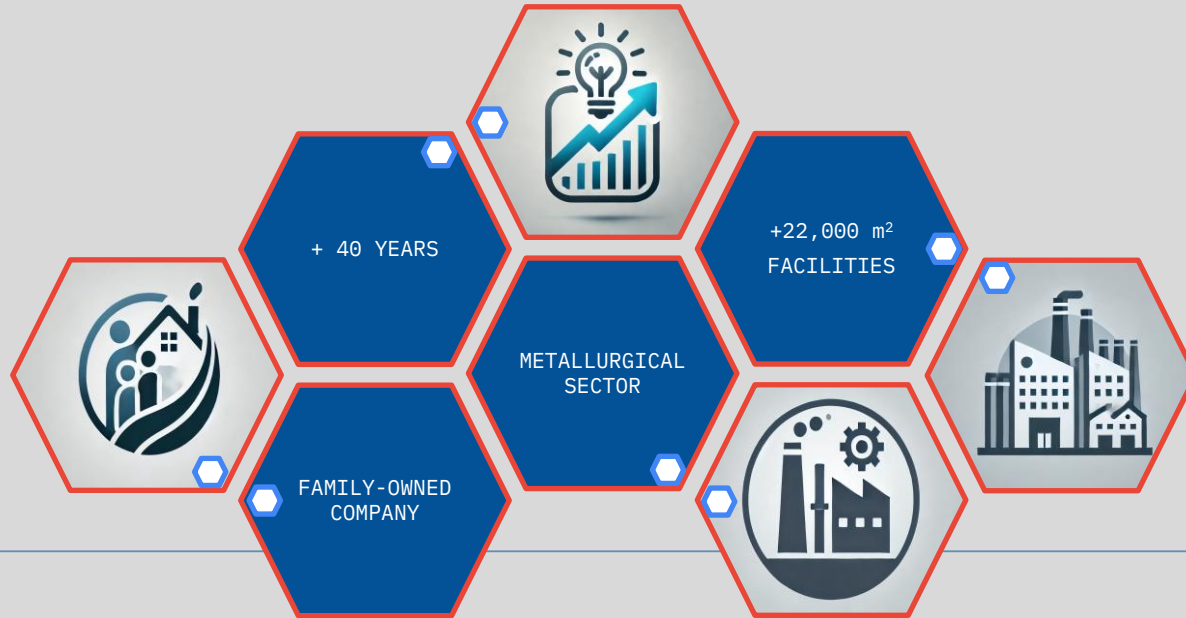


This presentation is a commercial in confidence document.

If you are not the intended recipient, you are hereby notified that unauthorized use, disclosure and/or copying is prohibited under applicable law. If you have received this message in error, please notify us immediately by email at info@gmbolea.com or at phone No. +34 968 324 220 and please destroy it.

This document is made by human and enhanced with AI

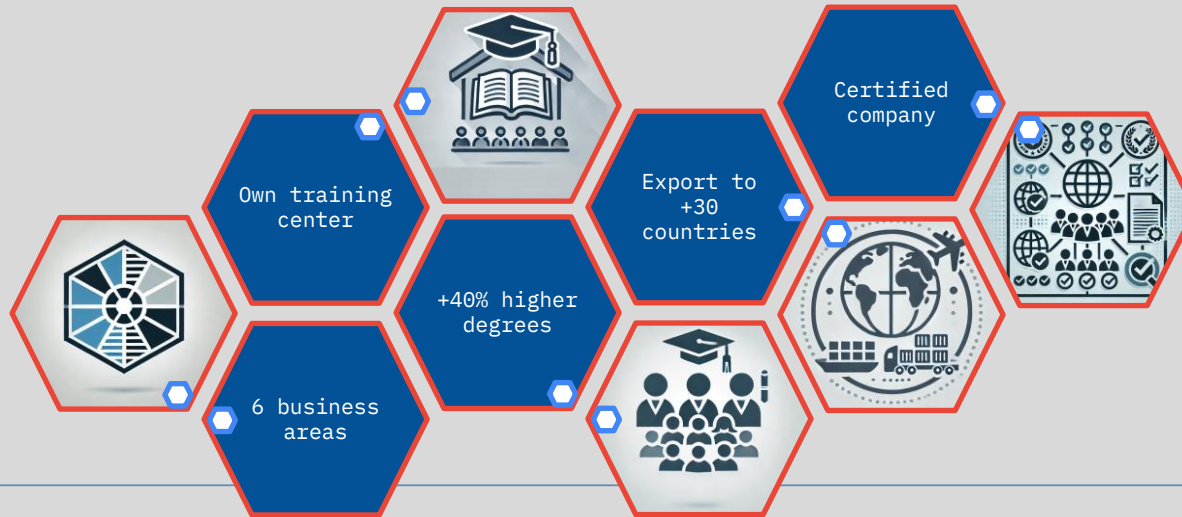
About us...



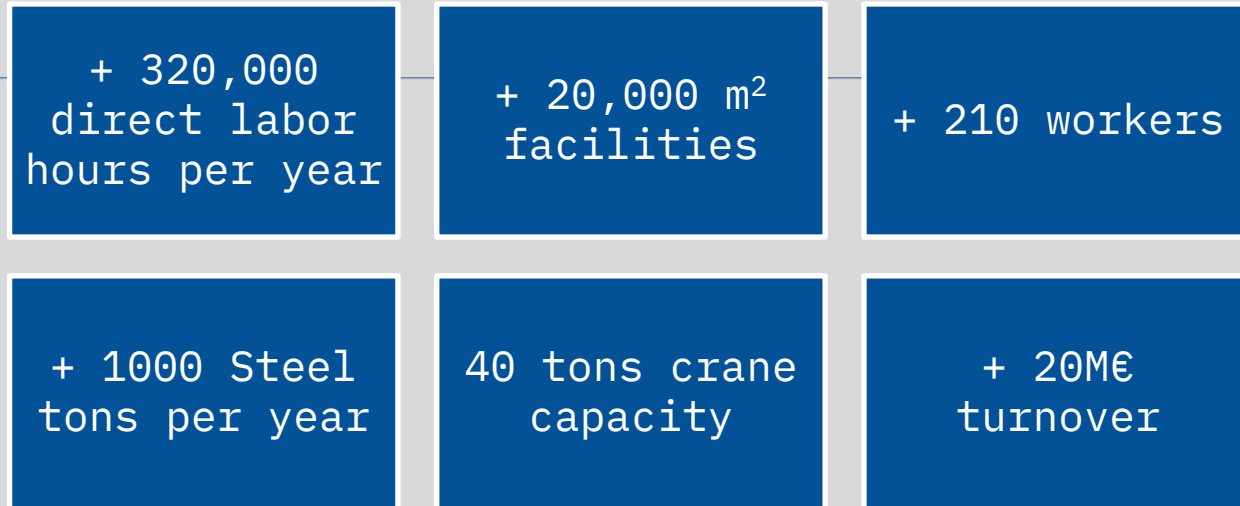
Cartagena, Spain



About us...



- ISO 9001:2015
- ISO 9100:2018
- ISO 3834-2:2005
- ASME U + U2 STAMPS
- NATIONAL BOARD R STAMP
- PECAL/AQAP 2310 & 2110
- NATO CERTIFICATE
- RePro Certificate
- ISO 45001:2018
- ISO 14001:2015
- COMPLIANCE UNE 19601:2017



Capacities



Headquarters &
Boilermaking



Maintenance &
Repairs



Machining



Special
assemblies

Capabilities



Engineering &
Technical Office



Welding &
Boilermaking



Machining



Assembly &
Mechanical
adjustment



Maintenance &
Repairs



Quality control &
Inspection

Services

Engineering & Technical Office

+45000 hours per year of engineering and Project management capabilities

Cutting-Edge mechanical engineering tools for CAD, CAM & CAE

Engineering tools fully connected with ERP for real-time Project management

Proprietary AI-based tools for budget agility and personalized attention

CAD:

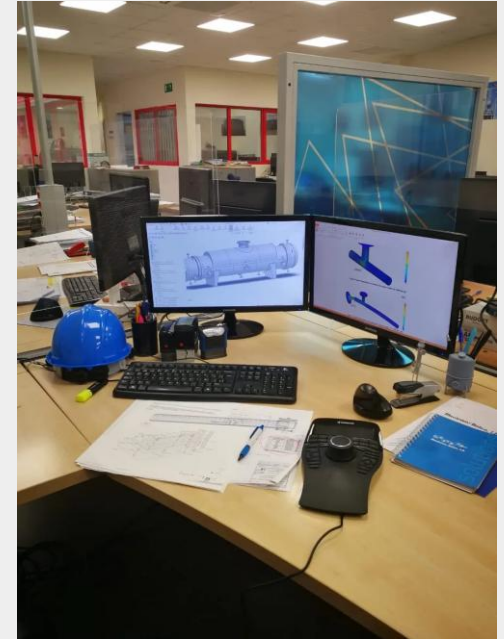
- Solidworks
- CATIA V5
- AutoCAD

CAE:

- ANSYS R26
- HTRI
- PV Elite
- CypeCAD

CAM:

- CATIA
- MasterCAM



Boilermaking & Welding

Rolling capacity up to 45 mm in CS and 36 mm Duplex Stainless Steel

MIG/MAG, GTAW, SMAW, SAW, FCAW, Flame brazing and specialized machinery for tube-plate and tube-tube joints

Laser cutting, plasma, oxyacetylene, shear and large saw

Own capacity for thermal treatments: gas oven and localized treatments

PROCEDURES:

- ASME
- EN
- Lloyd's

MATERIALS:

- CARBON STEEL
 - HIC – SPECIAL SERVICE
- AUSTENÍTIC
- CARBON STEEL-STAINLESS STEEL
- DÚPLEX/SUPERDUPLEX
- STEEL ALLOYS (P4, P5, P6, P7, P91)
- INCONEL
- INCOLOY
- HASTELLOY
- MONEL
- TITANIUM
- CU-NI
- ALUMINUM
- POLYETHYLENE



Machining

Vertical lathe for large machining operations. 2500 mm swing and 2100 mm Z

CNC parallel lathes with motorized turret Y axis

Stress relief for large parts by oven and vibrations Large-sized 5-axis continuous Gantry type milling machine.

6000x3800x1250 mm up to 30,000 kg 5-axis indexable milling machine with mobile column for large loads.
8000x1600x1700mm

4 high-speed machining centers with 3, 4 and 5 continuous axes

Dimensional control by CMM and Laser Tracker



Mechanical Assembly & Adjustment

Capacity for on-site assembly of tanks using 16-ton lifting jacks and a diameter of +40 m.

Laser assembly and alignment of dynamic equipment using dedicated equipment.

Pre-tensioning of bolts for controlled tightening of large equipment.

Hot pipe connections using hot-taps



MEDIA

- 40 TON PRESS
- 6 CONVENTIONAL LATHES UP TO L 8m and D 1.2m
- 2 CNC LATHES
- 3 LARGE CNC MILLING MACHINES
- 2 BORING MACHINES
- MOTORIZED SAWS AND SHEARS
- ASSEMBLY AND ADJUSTMENT AREA

Maintenance & Repairs

+4m pit for precise assembly of large vertical equipment

CNC and conventional machinery for agile service

Three areas of specialization

- Industrial maintenance
- Naval maintenance
- Repairs



Inspection & Quality Control

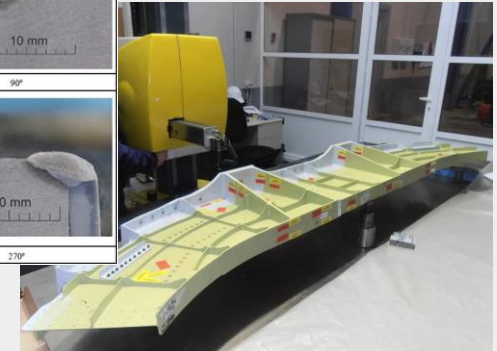
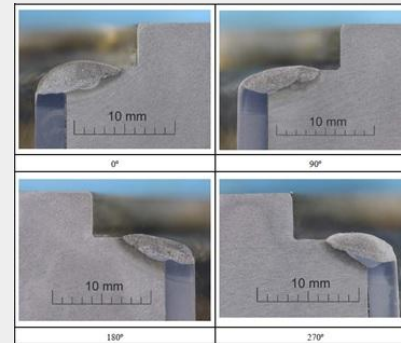
Dimensional control by CMM and Laser tracker

IWE welding engineers and ICS welded construction inspectors

Own inspection service for visual inspection (VT) and dye penetrant liquids (NDT) S/ EN ISO 9712:2012

Dimensional control room with controlled temperature and humidity

- EXPERIENCE WITH ALL CERTIFICATION ENTITIES AND INSPECTION SERVICES (THIRD PARTIES)
- OWN TEST BENCH FOR HYDROSTATIC TESTS
- OTHERS
 - THICKNESS GAUGES
 - ROUGHNESS METERS
 - EXTERNAL AND INTERNAL MICROMETERS UP TO 1 m
 - IMPEDANCE AND ELECTRICAL INSULATION METERS
 - SPARK METERS
 - SOUND LEVEL METERS AND VIBROMETERS
 - ENDOSCOPES
 - ...



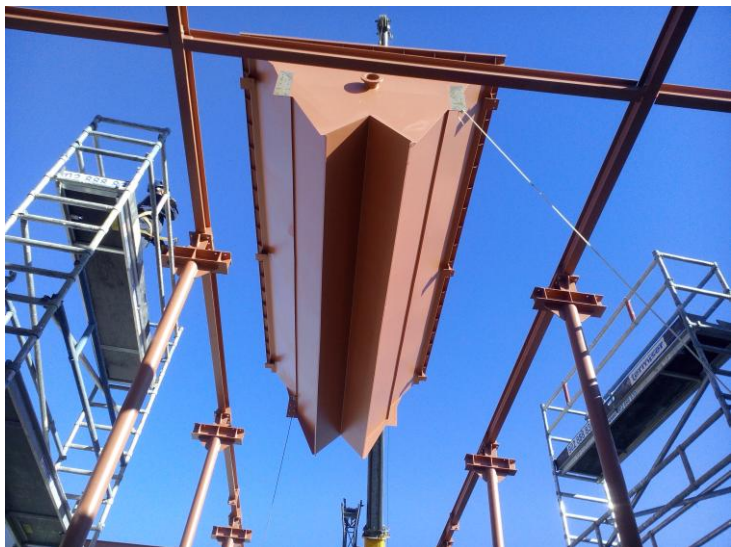
- 
- A vertical list of six business areas, each represented by a circular icon on the left and a blue horizontal bar on the right. The icons are: 1. Maintenance and Repairs (gears and tools), 2. Industrial Assembly (factory building), 3. Fabrication (circular patterns and tools), 4. Aeronautics & Big Science (rocket and atom symbols), 5. Food & Pharma (flask and plant), 6. Naval & Defense (ship and shield).
1. MAINTENANCE AND REPAIRS
 2. INDUSTRIAL ASSEMBLY
 3. FABRICATION
 4. AERONAUTICS & BIG SCIENCE
 5. FOOD & PHARMA
 6. NAVAL & DEFENSE

Business areas



- +100,000 work hours per year
- +40,000-inch fabrication and assembly of pipelines
- Assembly and maintenance of tank according to API 650, API 653 and special tanks
- Assembly of PITs for fuel load
- Tie ins nozzle connections with Hot-Taps procedure*
- Assembly of pumping stations, storage plants and fuel filtering at airports
- Complete installation of hydrant pipeline networks

Industrial assembly







- +70,000 work hours per year
- Own technical office
- Semi-heavy boilermaking of pressure vessels and unique equipment
- Design and construction according to ASME, EN and AD-Merkblätter
- Manufacturing and testing according to ASME IX
- Wide range of alloys
- Manufacturing of complete process units and skids

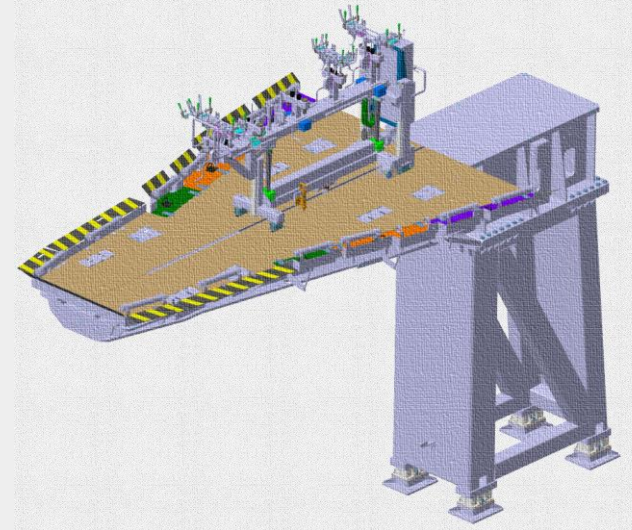
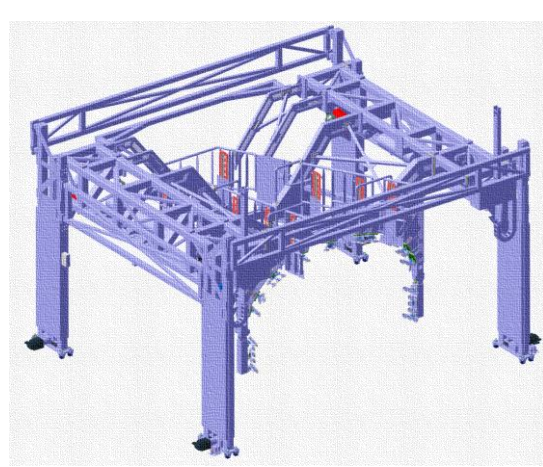


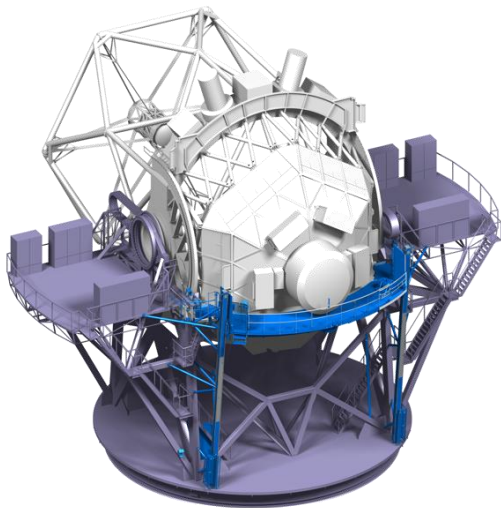
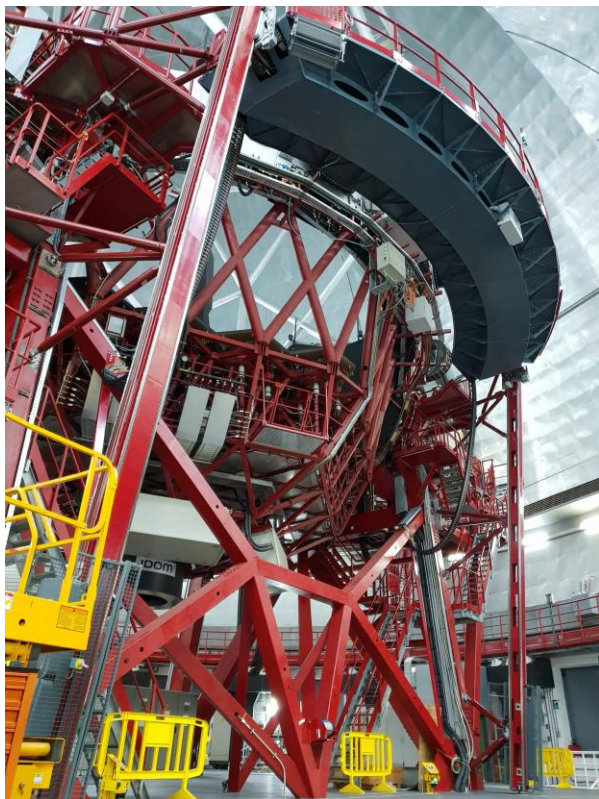


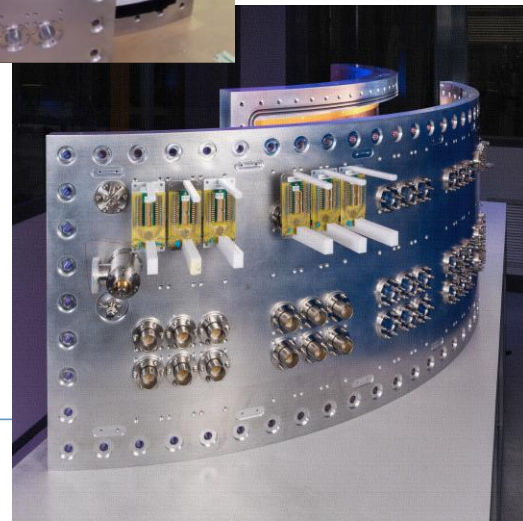
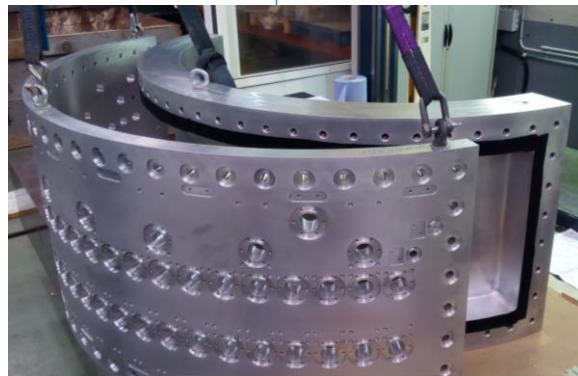




- Tailormade project under demanding requirements
- Aeronautical and aerospace tooling
- Complete fabrication of Telescopes' mechanical components
- Particle Accelerators sub-assemblies
- Nuclear research tooling, part manufacturing & sub-assemblies
- High added value fabrication
- Traceability and quality guaranteed throughout the process and final product









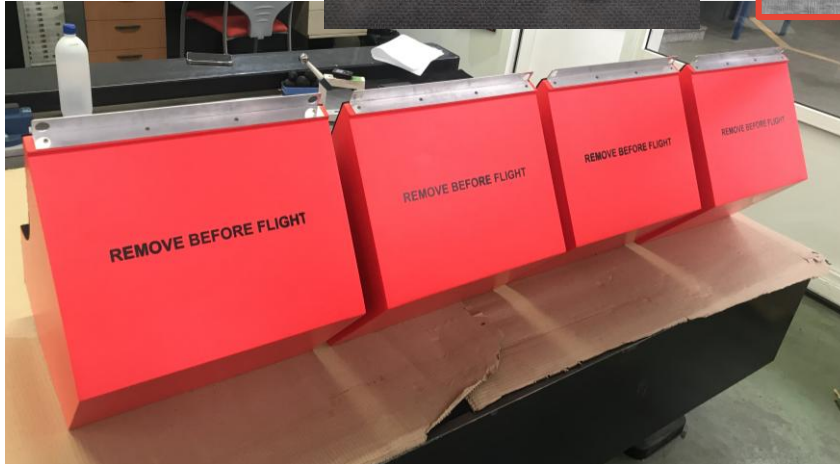
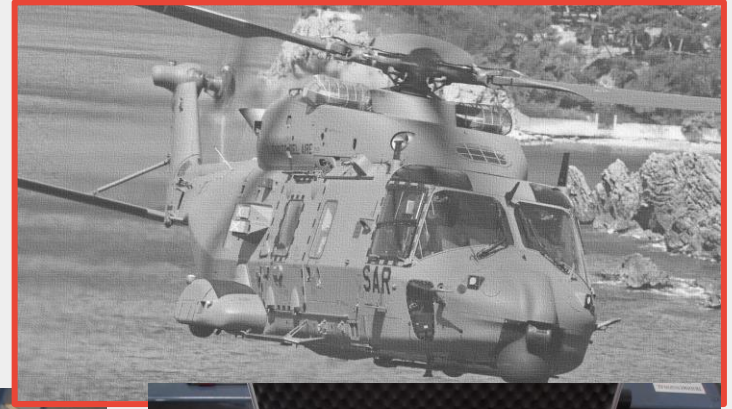
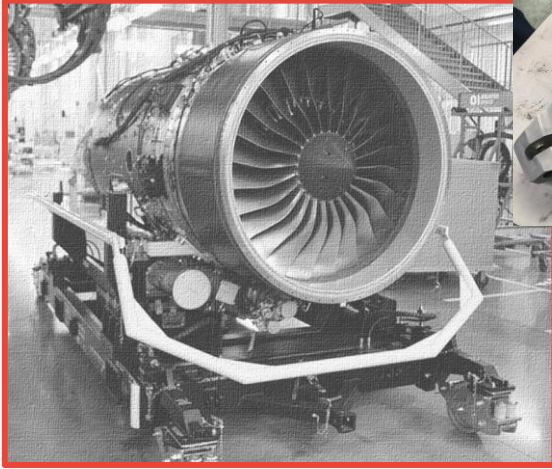
- Machinery and facilities tailored to each particular need
- Support throughout the product life cycle
- Process-oriented product. Distributed Control System integrable
- High-quality hygienic finish
- Design + fabrication + FAT + SAT + after sales
- Autoclaves, mixers, pilot plants, spray dryers





Naval & Defense







New facilities



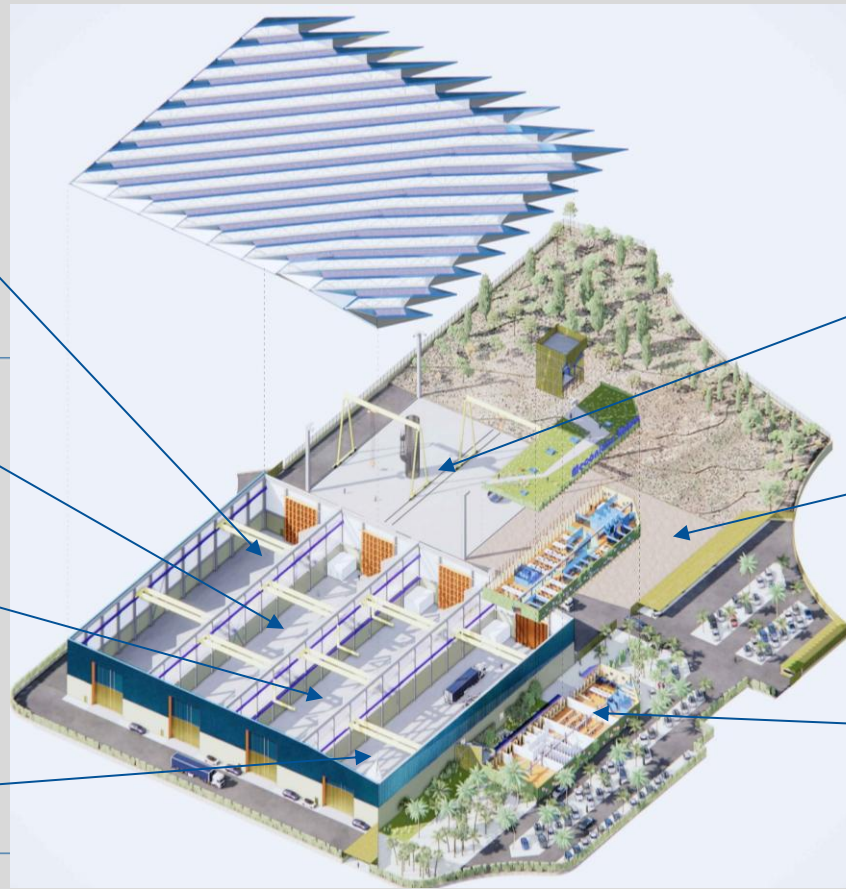
New facilities

Carbon Steel
workshop

Special alloy
workshop

Clean assembly
workshop

Big machining
workshop



Engineered
yard

Storage of
equipment yard

Office,
training
center and
changing rooms

New facilities

Big machining



5 axes CNC machining
Volume (XYZ): **16x5x4m**
Accuracy: 0,02mm
Vertical lathing: D2,5m
Metrology and dimensional
verification room



New facilities

Special alloys

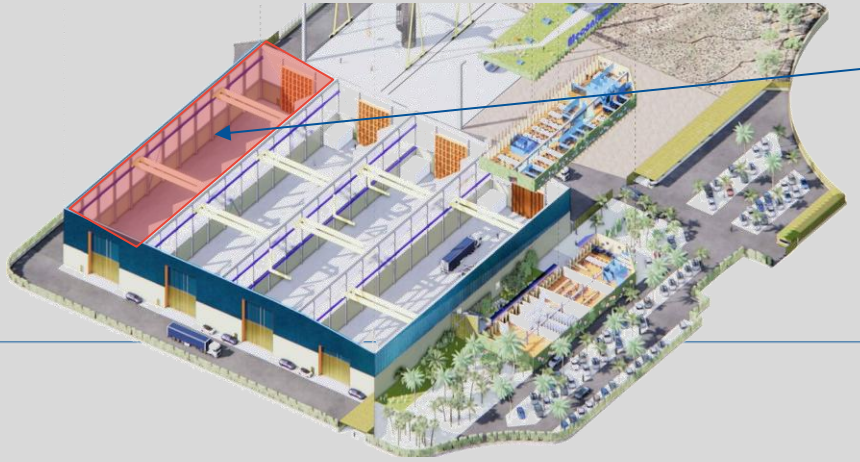


Plate rolling up to 80mm thick
Automatic beveling machines
Automatic 14m SAW column & boom
Warehouse for filler metal with
controlled temperature and
humidity



New facilities

Carbon steel

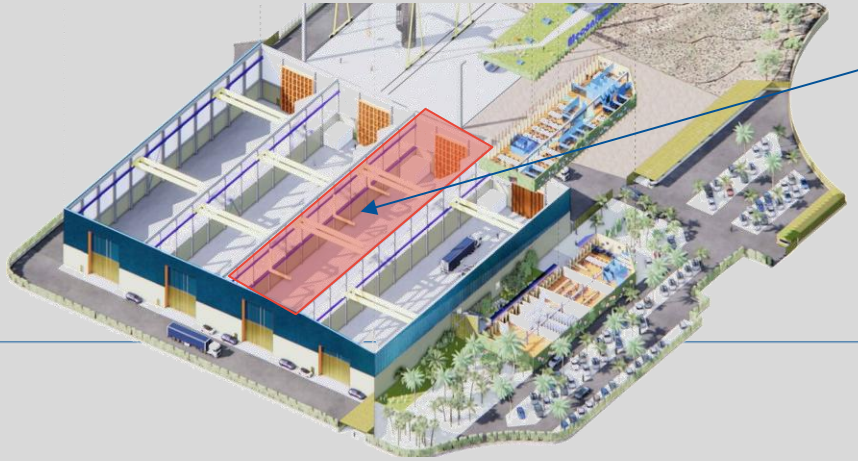


Adaptive robotic welding
Robotic SAW column & boom
Adaptive CNC plasma cutting



New facilities

Clean assembly



Areas with different levels of cleanliness depending on the project
Functional tests and FAT (Factory Acceptance Test)
Dry runs/Mock-up assemblies

New facilities

Engineered yard

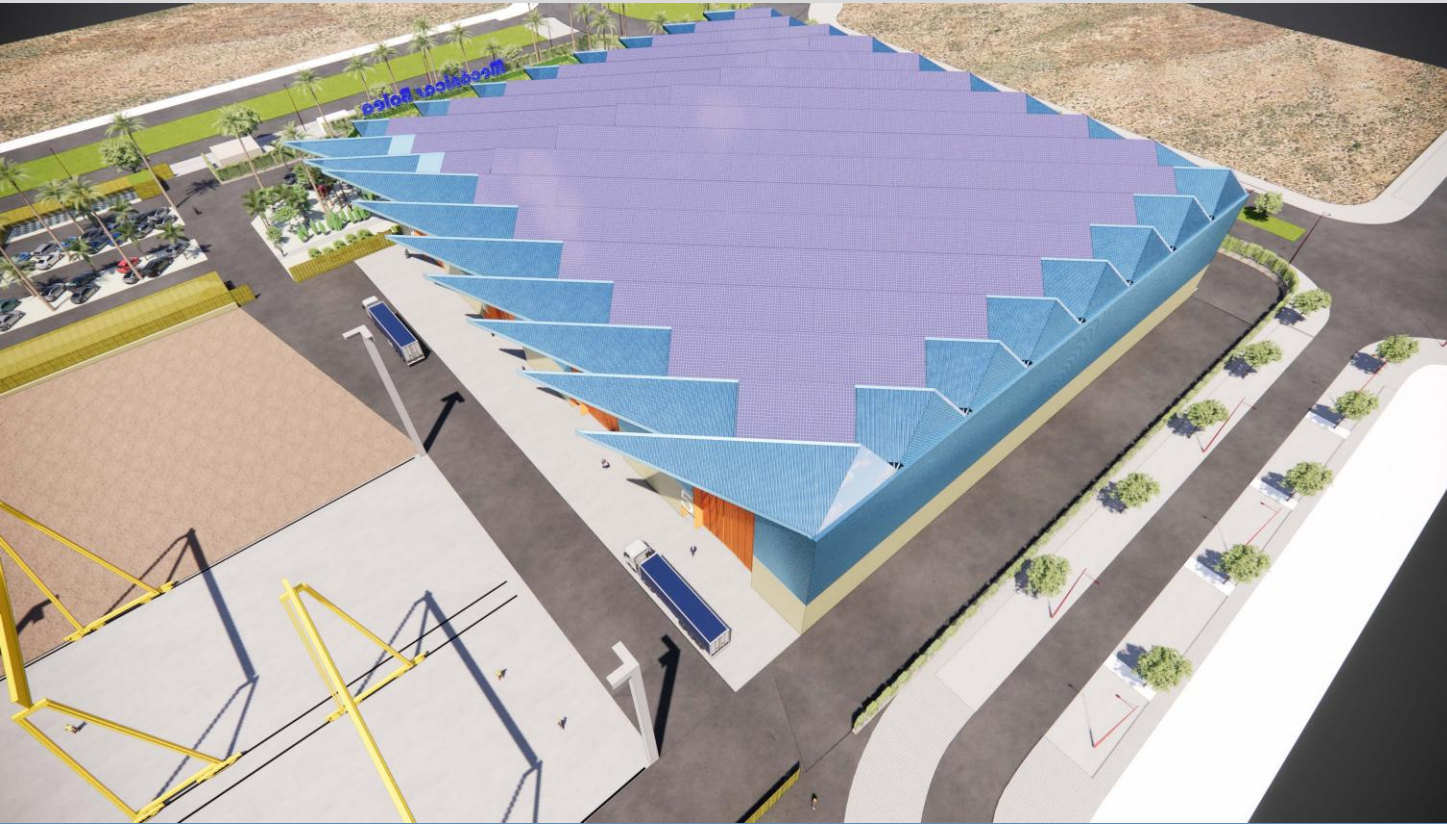


Thermal & special treatments
Hydraulic tests
Finishing
Dry runs/Mock-up assemblies

New facilities



New facilities



New facilities



New facilities



New facilities
READY Q1 2027!

+450,000 direct labor hours per year	+42,000 m ² facilities	+ 270 workers
+ 1500 tons per year	+100 tons crane capacity	14 m of clearance to the crane hook
Full in- house production	Zero net CO ₂ emissions	+30M turnover

New capabilities

Services



Products / Projects



New capacities

